

Grand Drive Raynes Park, SW20 9NF

£335,000 Leasehold

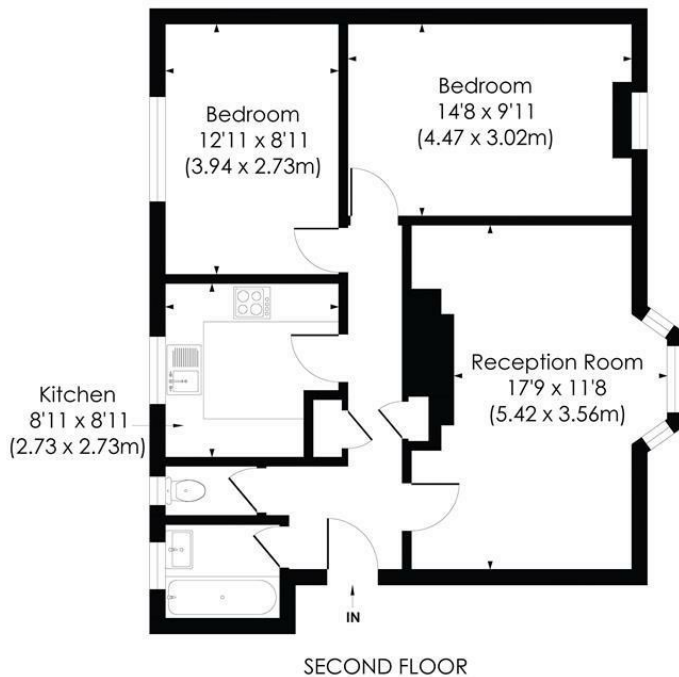


This spacious 715 Sq.ft. TWO DOUBLE BEDROOM top floor apartment with private loft storage and private bike/storage shed is located with easy access to Raynes Park, Morden, Wimbledon and Motspur Park. Close to local shops, bus connections and amenities. An ideal first/second time purchase or buy to let investment. There is a superb sized reception room with fireplace, modern kitchen, separate w.c and family bathroom. There is also communal grounds, residents parking, double glazing, gas central heating, shared hallway storage. Offered to the market with NO ONWARD CHAIN.

GRAND DRIVE, SW20

Approx. Gross Internal Floor Area

704 Sq. ft/65.44 Sq. m

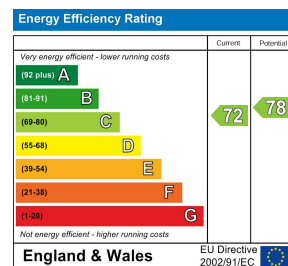


pixangle
PROPERTY MARKETING

This floor plan has been prepared for illustration purposes only, in accordance with the latest RICS code of measuring and is not to scale. All measurements and areas are approximate and whilst every effort has been made to ensure the accuracy of the plan contained here, no responsibility is taken for any error, omission or misstatement.

© Pixangle Property Marketing Ltd. info@pixangle.com Tel: 0208 870 2118

- 715 sqft - Two Double Bedroom
- Top Floor Apartment
- Lease: 112 year remaining
- No Onward Chain
- Easy Access to Raynes Park and Morden
- Spacious Reception Room
- Modern Kitchen and Bathroom
- Bike Storage Shed - Private Loft Storage
- Energy Performance Certificate Rating - C
- Council Tax Band - C



For Free Mortgage Quote and Best Mortgage Rates, call Ellisons Mortgage Advisor on 0208 543 1166



Although these particulars are believed to be correct, their accuracy is not guaranteed and they do not form part of any contract.

Celebrating 30 years
of successful Sales and
Lettings in Merton

